



# The Sizewell C Project

## 9.11 Responses to the ExA's First Written Questions (ExQ1) Volume 2 - Figures Part 2 of 7

---

Revision: 1.0

Applicable Regulation: Regulation 5(2)(o)

PINS Reference Number: EN010012

---

June 2021

Planning Act 2008  
Infrastructure Planning (Applications: Prescribed  
Forms and Procedure) Regulations 2009



---

## CONTENTS

### PART 1 OF 7

#### Chapter 2

- Figure 2.1 Main Development Site Boundary and Nominated Site Area for Sizewell C from NPS EN-6
- Figure 2.2 Main Development Site Main Platform Proposed General Arrangement and Nominated Site Area for Sizewell C from NPS EN-6
- Figure 2.3 Main Development Site showing the lines of Easting and Northing
- Figure 2.4 County, District, Town and Parish Councils that have made Relevant Representations
- Figure 2.5 Main Development Site Typical General Arrangement (SZC Construction)
- Figure 2.6 Main Development Site Cut Off Wall Extent, Excavation Levels and Marine Tunnelling Shafts Sheet 1 of 3
- Figure 2.7 Main Development Site Cut Off Wall Extent, Excavation Levels and Marine Tunnelling Shafts Sheet 2 of 3
- Figure 2.8 Main Development Site Cut Off Wall Extent, Excavation Levels and Marine Tunnelling Shafts Sheet 3 of 3
- Figure 2.9 Land East of Eastlands Industrial Estate Site Layout

#### Chapter 5

- Figure 5.1 Indicative sketch of how a potential link could be provided to link the two village bypass to a future four-village bypass

**NOT PROTECTIVELY MARKED**

- 
- Figure 5.2 A12 Four village route options (A12 Four Villages Study 2006) with the proposed Two Village Bypass route
- Figure 5.3 A12 Four Villages route options (A12 Four Villages Study 2014) with the proposed Two Village Bypass route
- Figure 5.4 A12 SEGWay Strategic Case 2017 route options with the proposed Two Village Bypass route

## **PART 2 OF 7 (THIS PART)**

### **Chapter 15**

- Figure 15.1 Foul water overview

### **Chapter 17**

- Figure 17.1 Response to First Written Questions - HE 1.1
- Figure 17.2 Response to First Written Questions - HE 1.1 and HE 1.27
- Figure 17.3 Marine Historic Environment Study Area - Figure 23.1 Update
- Figure 17.4 Non-designated Heritage Records – Figure 23.2 Update
- Figure 17.5 Distribution of Deposits with High Palaeoenvironmental Potential – Figure 23.3 Update

## **PART 3 OF 7**

### **Chapter 18**

- Figure 18.1 Representative Viewpoints: Operational Phase Parameters Based Photowire. Key
- Figure 18.2 Representative Viewpoints: Operational Phase Parameters Based Photowire. Viewpoint 5: Footpath South of Leiston Abbey
- Figure 18.3 Representative Viewpoints: Operational Phase Parameters Based Photowire. Viewpoint 6: Suffolk Coast Path East of Goose Hill

**NOT PROTECTIVELY MARKED**

**NOT PROTECTIVELY MARKED**

- 
- Figure 18.4 Representative Viewpoints: Operational Phase Parameters Based Photowire. Viewpoint 8: Footpath North of Leiston Abbey
- Figure 18.5 Representative Viewpoints: Operational Phase Parameters Based Photowire. Viewpoint 9: Sizewell Gap South of Greater Gabbard Sub-Station
- Figure 18.6 Representative Viewpoints: Operational Phase Photowire - Year 1. Viewpoint 9: Sizewell Gap South of Greater Gabbard Sub-Station
- Figure 18.7 Representative Viewpoints: Operational Phase Photowire - Year 15. Viewpoint 9: Sizewell Gap South of Greater Gabbard Sub-Station
- Figure 18.8 Representative Viewpoints: Operational Phase Parameters Based Photowire. Viewpoint 10: Suffolk Coast Path and Sandlings Walk East of Hill Wood
- Figure 18.9 Representative Viewpoints: Operational Phase Photowire - Year 1. Viewpoint 10: Suffolk Coast Path and Sandlings Walk East of Hill Wood
- Figure 18.10 Representative Viewpoints: Operational Phase Photowire - Year 15. Viewpoint 10: Suffolk Coast Path and Sandlings Walk East of Hill Wood
- Figure 18.11 Representative Viewpoints: Operational Phase Parameters Based Photowire. Viewpoint 14: Suffolk Coast Path at Minsmere Sluice
- Figure 18.12 Representative Viewpoints: Operational Phase Parameters Based Photowire. Viewpoint 17: National Trust Dunwich Coastguard Cottages Car Park
- Figure 18.13 Representative Viewpoints: Operational Phase Parameters Based Photowire. Viewpoint 26: 1800m Directly East of Sizewell Power Stations
- Figure 18.14 Representative Viewpoints: Operational Phase Photowire - Year 1. Viewpoint 26: 1800m Directly East of Sizewell Power Stations

---

Figure 18.15 Representative Viewpoints: Operational Phase Photowire - Year 15.  
Viewpoint 26: 1800m Directly East of Sizewell Power Stations

## **PART 4 OF 7**

Figure 18.16 Example photographs of the finish and appearance of plinth -  
Terminal 2B building at Heathrow airport

Figure 18.17 New Bridleway Link: Landscape Retention

Figure 18.18 New Bridleway Link: Site Clearance

Figure 18.19 New Bridleway Link: Landscape Proposals

Figure 18.20 Visibility of Change to Height of Operational Parameter P5

Figure 18.21 Freight Management Facility. Representative Viewpoint 1: Existing  
View

Figure 18.22 Freight Management Facility. Representative Viewpoint 1: Photowire  
- Year 1

Figure 18.23 Freight Management Facility. Representative Viewpoint 1: Photowire  
- Year 10

Figure 18.24 Sizewell Link Road oLEMP Plate 4.1. Proposed oLEMP Habitat  
Typology – Overview

Figure 18.25 Sizewell Link Road oLEMP Plate 4.2. Proposed oLEMP Habitat  
Typology – Area 1

Figure 18.26 Sizewell Link Road oLEMP Plate 4.3. Proposed oLEMP Habitat  
Typology – Area 2

Figure 18.27 Sizewell Link Road oLEMP Plate 4.4. Proposed oLEMP Habitat  
Typology – Area 3

Figure 18.28 Sizewell Link Road oLEMP Plate 4.5. Proposed oLEMP Habitat  
Typology – Area 4

- 
- Figure 18.29 Sizewell Link Road oLEMP Plate 4.6. Proposed oLEMP Habitat Typology – Area 5
- Figure 18.30 Sizewell Link Road oLEMP Plate 4.7. Proposed oLEMP Habitat Typology – Area 6
- Figure 18.31 Sizewell Link Road oLEMP. Woodland Planting East of The East Suffolk Line
- Figure 18.32 Sizewell Link Road. Representative Viewpoint 2: Existing View
- Figure 18.33 Sizewell Link Road. Representative Viewpoint 2: Photowire

## **PART 5 OF 7**

- Figure 18.34 Sizewell Link Road. Representative Viewpoint 3: Existing View
- Figure 18.35 Sizewell Link Road. Representative Viewpoint 3: Photowire
- Figure 18.36 Sizewell Link Road. Representative Viewpoint 6: Existing View
- Figure 18.37 Sizewell Link Road. Representative Viewpoint 6: Photowire
- Figure 18.38 Sizewell Link Road. Representative Viewpoint 7: Existing View
- Figure 18.39 Sizewell Link Road. Representative Viewpoint 7: Photowire
- Figure 18.40 Sizewell Link Road. Representative Viewpoint 8: Existing View
- Figure 18.41 Sizewell Link Road. Representative Viewpoint 8: Photowire
- Figure 18.42 Illustrative Visual of Proposed Pretty Road Overbridge

## **PART 6 OF 7**

- Figure 18.43 Two Village Bypass oLEMP Plate 4.1. Proposed oLEMP Figure Habitat Typology
- Figure 18.44 Two Village Bypass oLEMP. Woodland Corridors and Linkages

- 
- Figure 18.45    Figure 18.46: Two Village Bypass. Representative Viewpoint 1: Existing View
- Figure 18.46    Two Village Bypass. Representative Viewpoint 1: Photowire
- Figure 18.47    Two Village Bypass. Representative Viewpoint 6: Existing View
- Figure 18.48    Two Village Bypass. Representative Viewpoint 6: Photowire
- Figure 18.49    Two Village Bypass. Representative Viewpoint 7: Existing View
- Figure 18.50    Two Village Bypass. Representative Viewpoint 7: Photowire
- Figure 18.51    Southern Park and Ride. Representative Viewpoint 9: Photograph Panel
- Figure 18.52    Southern Park and Ride. Representative Viewpoint 10: Photograph Panel
- Figure 18.53    Green Rail Route. Representative Viewpoint 5: Existing View
- Figure 18.54    Green Rail Route. Representative Viewpoint 5: Photowire
- Figure 18.55    Proposed Location for Ballast Stockpiling

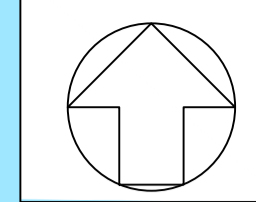
## **PART 7 OF 7**

### **Chapter 21**

- Figure 21.1    Landscape and Visual Receptor Groups within the Yoxford Community Area

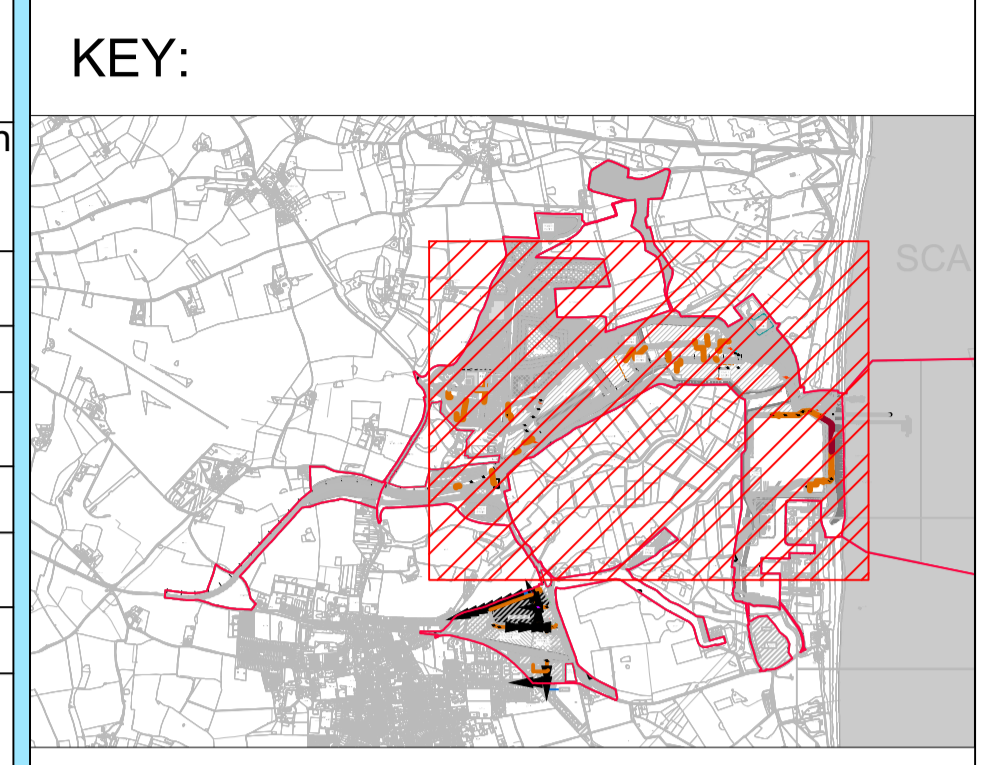
### **Chapter 24**

- Figure 24.1    Movement Framework Phase 1
- Figure 24.2    Movement Framework Phase 2-5
- Figure 24.3    Movement Framework Operational



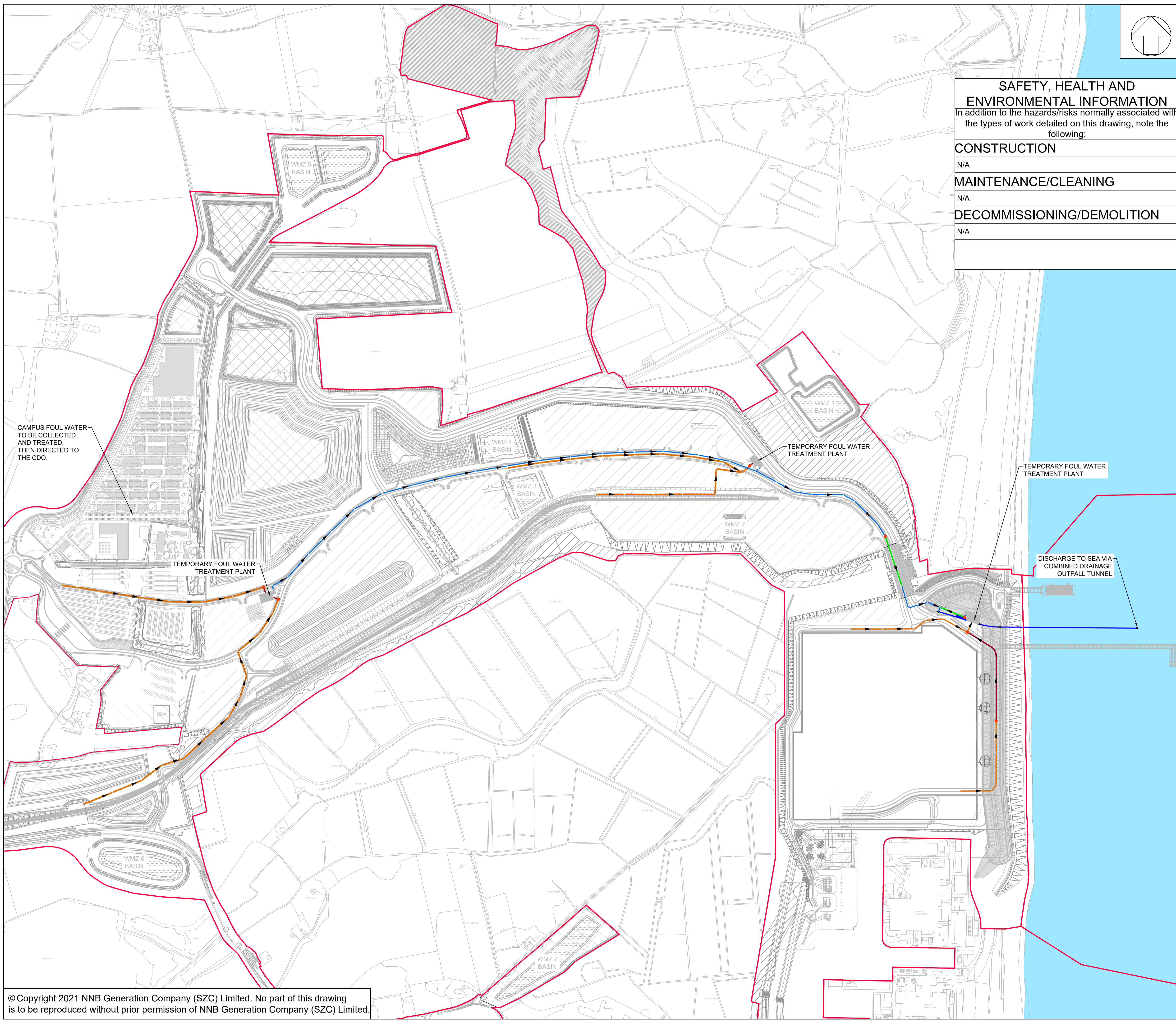
**NOTES:**  
 1. ALL DIMENSIONS ARE IN MILLIMETERS UNLESS OTHERWISE STATED.  
 2. DO NOT SCALE FROM THIS DRAWING.

<b>SAFETY, HEALTH AND ENVIRONMENTAL INFORMATION</b> In addition to the hazards/risks normally associated with the types of work detailed on this drawing, note the following:	
<b>CONSTRUCTION</b>	N/A
<b>MAINTENANCE/CLEANING</b>	N/A
<b>DECOMMISSIONING/DEMOLITION</b>	N/A



**LEGEND:**

	FOUL SEWER (GRAVITY NETWORK)
	FOUL SEWER (PUMPING MAIN)
	TREATED FOUL WATER (GRAVITY NETWORK)
	TREATED FOUL WATER (PUMPING MAIN)
	COMBINED DRAINAGE OUTFALL (CDO) TUNNEL
	PROJECT BOUNDARY
	PACKAGE PUMPING STATION



**NOT PROTECTIVELY MARKED**

**COPYRIGHT:**  
 Reproduced from Ordnance Survey map with the permission of Ordnance Survey on behalf of the controller of Her Majesty's Stationery Office © Crown copyright (2021). All Rights reserved. NNB GenCo Licence: 0100060408

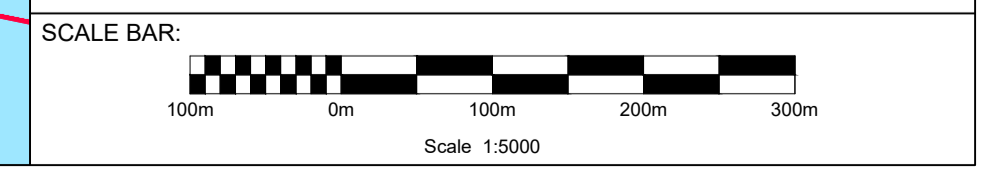


**DOCUMENT:**  
 SIZEWELL C PROJECT  
 RESPONSES TO EXAMINING AUTHORITY'S  
 WRITTEN QUESTIONS ISSUED ON  
 21ST APRIL 2021  
 CHAPTER 2 : GENERAL AND CROSS TOPIC

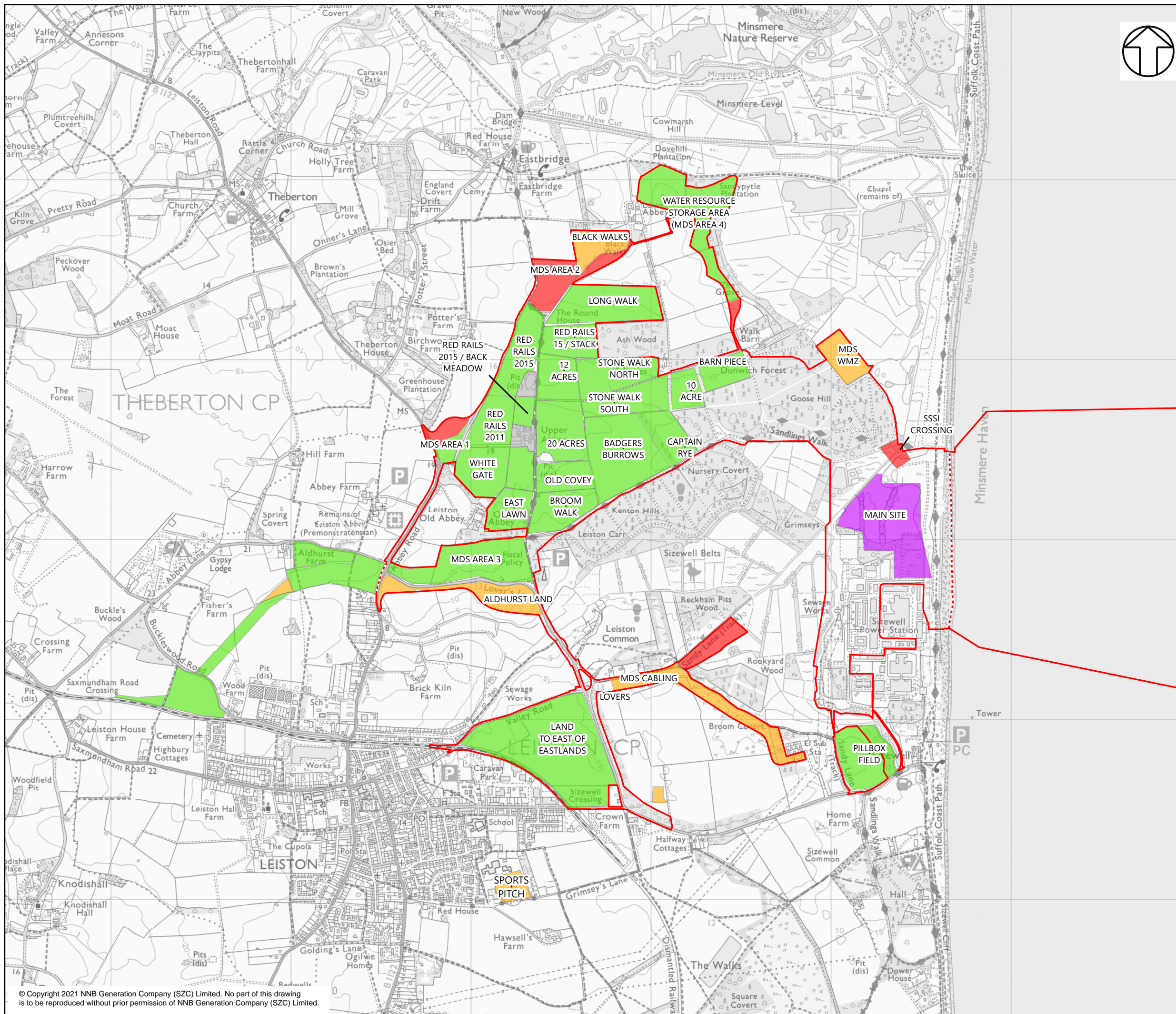
**DRAWING TITLE:**  
 FOUL WATER OVERVIEW

**DRAWING NO:**  
 FIGURE 15.1

**DATE:** JUNE 2021    **DRAWN:** NJ    **SCALE:** 1:5000 @A1







**NOTES**

**KEY**

- SIZEWELL C MAIN DEVELOPMENT SITE BOUNDARY
- EVALUATION TRENCHING
- GEOPHYSICAL SURVEY
- NOT YET SURVEYED
- NOT REQUIRED
- RESISTIVITY/GEOARCH SURVEY

NOT PROTECTIVELY MARKED

**COPYRIGHT**  
 Reproduced from Ordnance Survey map with the permission of Ordnance Survey on behalf of the controller of Her Majesty's Stationary Office © Crown Copyright (2019). All Rights reserved. NNB GenCo 0100060408.



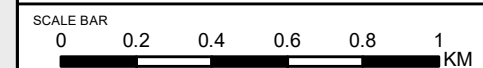
**DOCUMENT:**  
 SIZEWELL C PROJECT  
 RESPONSES TO EXAMINING AUTHORITY'S  
 WRITTEN QUESTIONS ISSUED ON 21 APRIL 2021  
 CHAPTER 17: HISTORIC ENVIRONMENT

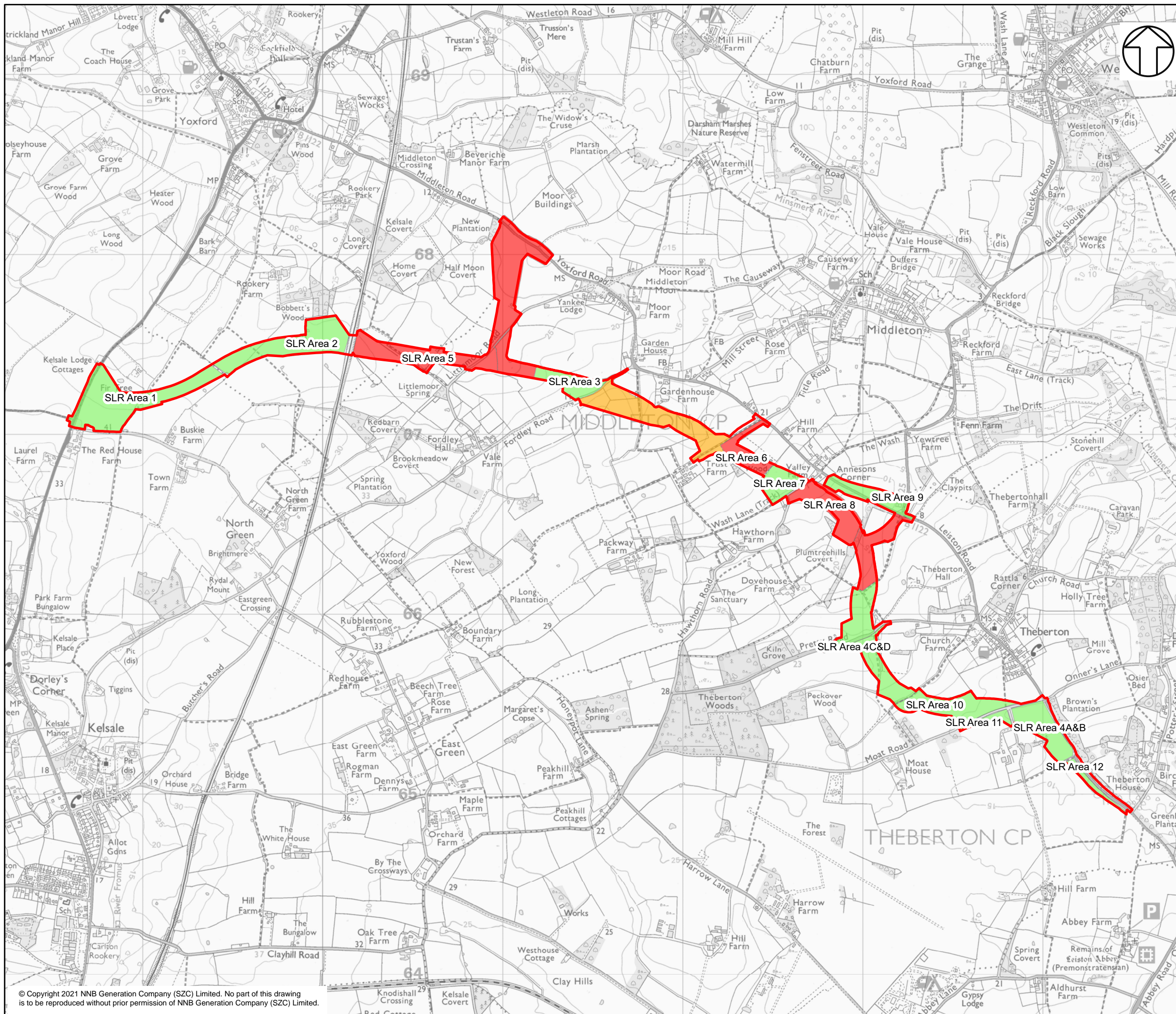
**DRAWING TITLE:**  
 FIELD NAMES AND ARCHAEOLOGICAL  
 FIELDWORK TO DATE (MAY 2021)

**RESPONSE TO FIRST WRITTEN QUESTIONS - HE 1.1**

**DRAWING NO:**  
 FIGURE 17.1

**DATE:** June 2021      **DRAWN:** A.K.      **SCALE:** 1:20,000 @A3





- NOTES**
- KEY**
- SIZEWELL LINK ROAD DEVELOPMENT SITE
  - EVALUATION TRENCHING
  - GEOPHYSICAL SURVEY
  - NOT YET SURVEYED

**NOT PROTECTIVELY MARKED**

**COPYRIGHT**  
 Reproduced from Ordnance Survey map with the permission of Ordnance Survey on behalf of the controller of Her Majesty's Stationery Office © Crown Copyright (2019). All Rights reserved. NNB GenCo 0100060408.



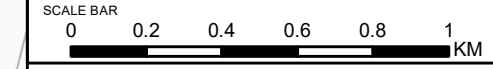
**DOCUMENT:**  
 SIZEWELL C PROJECT  
 RESPONSES TO EXAMINING AUTHORITY'S  
 WRITTEN QUESTIONS ISSUED ON 21 APRIL 2021  
 CHAPTER 17: HISTORIC ENVIRONMENT

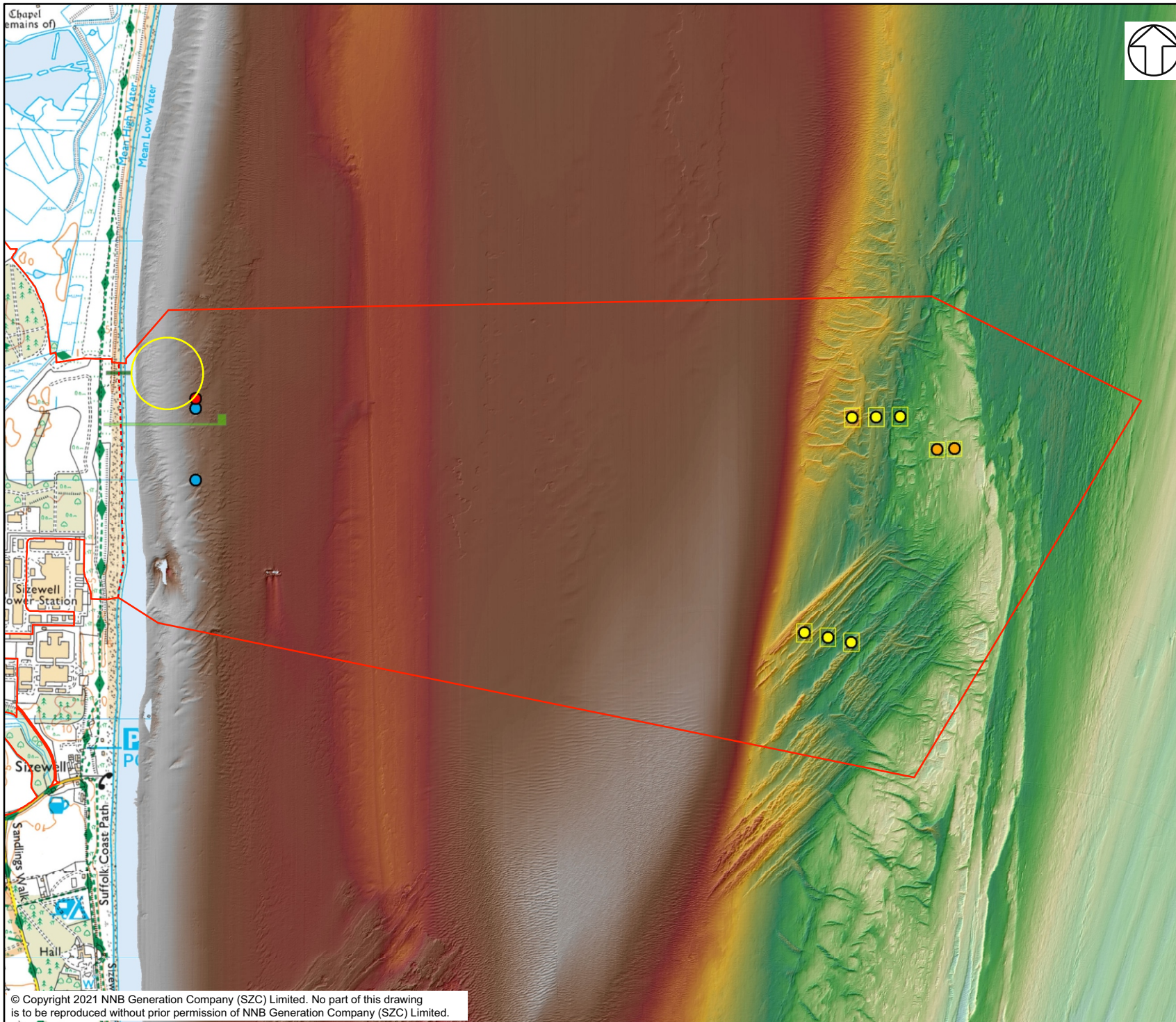
**DRAWING TITLE:**  
 FIELD NAMES AND ARCHAEOLOGICAL  
 FIELDWORK TO DATE (MAY 2021)

**RESPONSE TO FIRST WRITTEN QUESTIONS - HE  
 1.1 & 1.27**

**DRAWING NO:**  
**FIGURE 17.2**

**DATE:** June 2021      **DRAWN:** A.K.      **SCALE:** 1:20,000 @A3





**NOTES**  
 SIZEWELL C MAIN DEVELOPMENT SITE  
 BOUNDARY REPRESENTS MARINE HISTORIC  
 ENVIRONMENT STUDY AREA  
 FIGURE UPDATED FOR QUESTION HE.1.45

- KEY**
- SIZEWELL C MAIN DEVELOPMENT SITE BOUNDARY
  - - - DEMARCATION LINE
  - BLF (PERMANENT)
  - BLF (TEMPORARY)
  - CONSTRUCTION DISCHARGE OUTFALL
  - FISH RECOVERY AND RETURN
  - PROPOSED INTAKE. ONLY FOUR LOCATIONS WILL BE USED (TWO IN THE NORTH AND TWO IN THE SOUTH)
  - PROPOSED OUTFALL
  - INDICATIVE DREDGE AREAS
- BATHYMETRY (M OD)  
 High : 1.26571  
 Low : -17.0759

NOT PROTECTIVELY MARKED

**COPYRIGHT**  
 Reproduced from Ordnance Survey map with the permission of Ordnance Survey on behalf of the controller of Her Majesty's Stationery Office © Crown Copyright (2019). All Rights reserved. NNB GenCo 0100060408. Contains public sector information, licensed under the Open Government Licence v3.0, from UKHO Survey H11495.

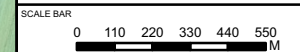


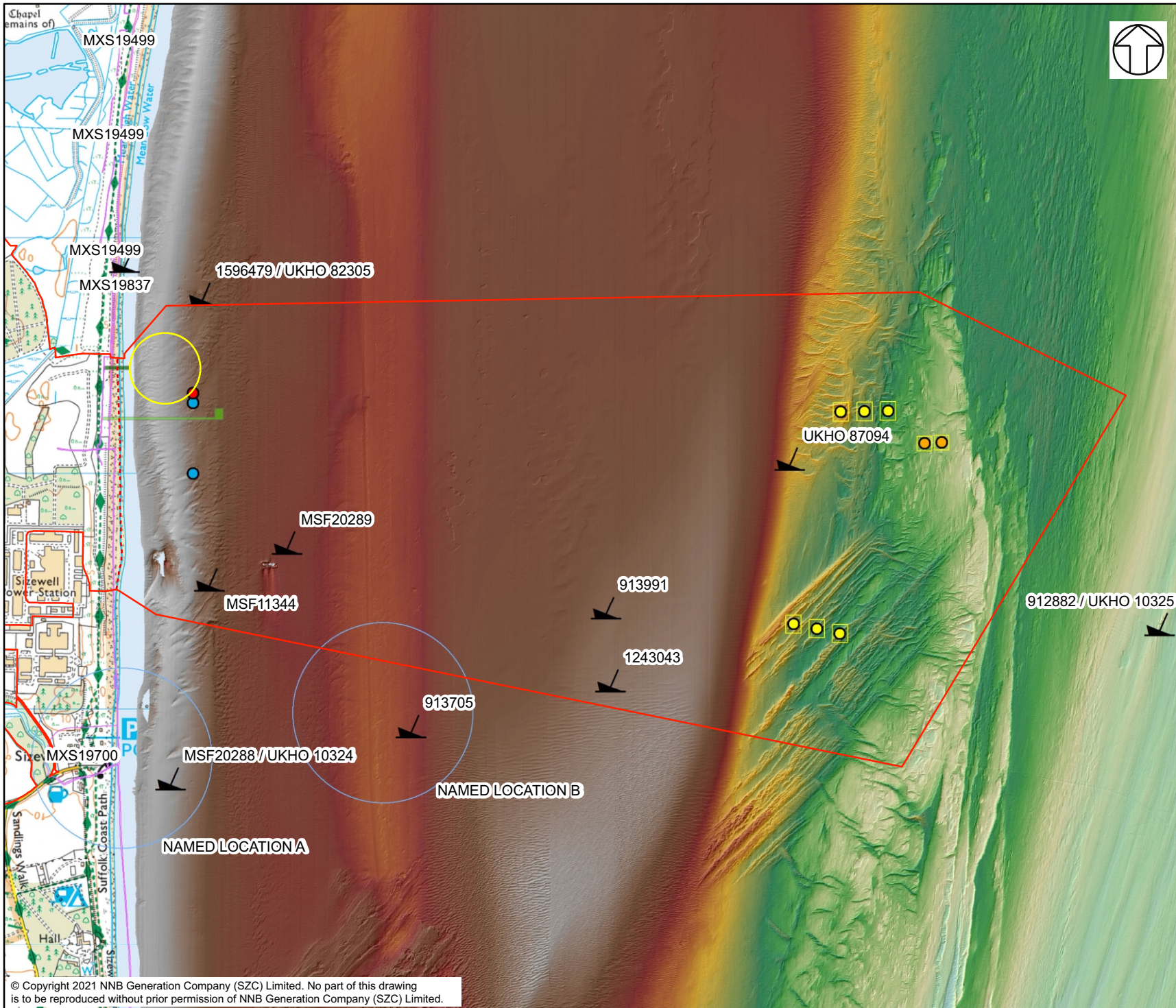
**DOCUMENT:**  
 SIZEWELL C PROJECT  
 RESPONSES TO EXAMINING AUTHORITY'S  
 WRITTEN QUESTIONS ISSUED ON 21 APRIL 2021  
 CHAPTER 17: HISTORIC ENVIRONMENT

**DRAWING TITLE:**  
 MARINE HISTORIC ENVIRONMENT STUDY AREA -  
 FIGURE 23.1 UPDATE

**DRAWING NO.:**  
 FIGURE 17.3

DATE: JUN 2021 DRAWN: M.J.G. SCALE: 1:22,000 @A4 REV: 03





**NOTES**  
 SIZEWELL C MAIN DEVELOPMENT SITE  
 BOUNDARY REPRESENTS MARINE HISTORIC  
 ENVIRONMENT STUDY AREA  
 FIGURE UPDATED FOR QUESTION HE.1.45

- KEY**
- SIZEWELL C MAIN DEVELOPMENT SITE BOUNDARY
  - - - DEMARCATION LINE
  - BLF (PERMANENT)
  - BLF (TEMPORARY)
  - CONSTRUCTION DISCHARGE OUTFALL
  - FISH RECOVERY AND RETURN
  - PROPOSED INTAKE. ONLY FOUR LOCATIONS WILL BE USED (TWO IN THE NORTH AND TWO IN THE SOUTH)
  - PROPOSED OUTFALL
  - INDICATIVE DREDGE AREAS
  - ▲ WRECKS (GIVEN POSITION)
  - NAMED LOCATION FOR LOSSES
  - WWII BEACH DEFENSES
- BATHYMETRY (M OD)  
 High : 1.27797  
 Low : -17.0759

NOT PROTECTIVELY MARKED

**COPYRIGHT**  
 Reproduced from Ordnance Survey map with the permission of Ordnance Survey on behalf of the controller of Her Majesty's Stationery Office © Crown Copyright (2019). All Rights reserved. NNB GenCo 0100060408.  
 Contains public sector information, licensed under the Open Government Licence v3.0, from UKHO Survey H11495  
 The Historic England GIS Data contained in this material was obtained in January 2019. The most publicly available up to date Historic England GIS Data can be obtained from <http://www.historicengland.org.uk> © Historic England 2019.  
 The Suffolk County Council Historic Environment Record Data contained in this material was obtained on 09/05/2019. © Suffolk County Council 2016.



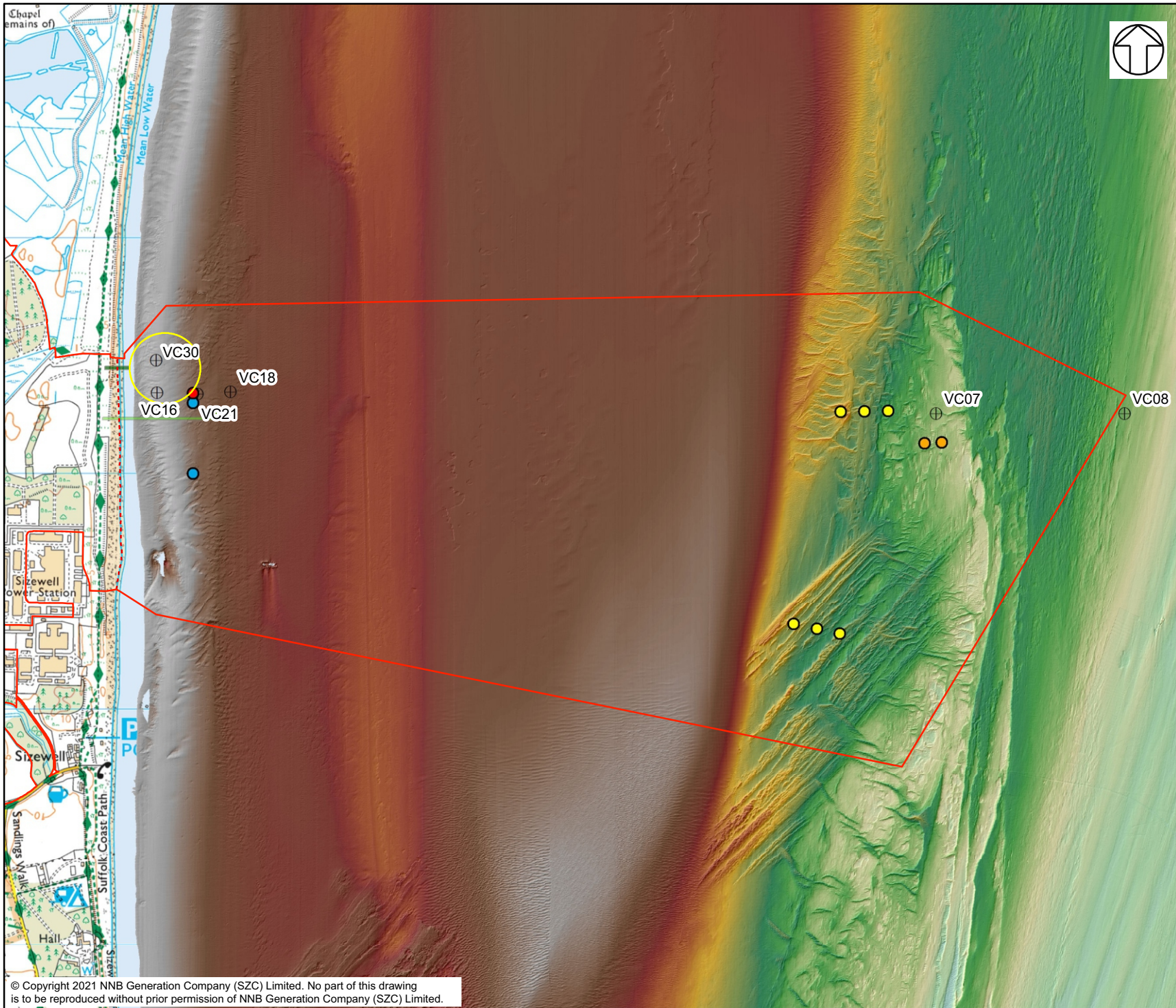
**DOCUMENT:**  
 SIZEWELL C PROJECT  
 RESPONSES TO EXAMINING AUTHORITY'S  
 WRITTEN QUESTIONS ISSUED ON 21 APRIL 2021  
 CHAPTER 17: HISTORIC ENVIRONMENT

**DRAWING TITLE:**  
 NON-DESIGNATED HERITAGE RECORDS -  
 FIGURE 23.1 UPDATE

**DRAWING NO.:**  
 FIGURE 17.4

DATE: JUN 2021    DRAWN: M.J.G.    SCALE: 1:22,000 @A4    REV: 03

SCALE BAR  
 0 110 220 330 440 550  
 M



**NOTES**  
 SIZEWELL C MAIN DEVELOPMENT SITE  
 BOUNDARY REPRESENTS MARINE HISTORIC  
 ENVIRONMENT STUDY AREA  
 FIGURE UPDATED FOR QUESTION HE.1.45

- KEY**
- SIZEWELL C MAIN DEVELOPMENT SITE BOUNDARY
  - - - DEMARCATION LINE
  - BLF (PERMANENT)
  - BLF (TEMPORARY)
  - CONSTRUCTION DISCHARGE OUTFALL
  - FISH RECOVERY AND RETURN
  - PROPOSED INTAKE. ONLY FOUR LOCATIONS WILL BE USED (TWO IN THE NORTH AND TWO IN THE SOUTH)
  - PROPOSED OUTFALL
  - INDICATIVE DREDGE AREAS
  - ⊕ ASSESSED VIBROCORES
- BATHYMETRY (M OD)**  
 High : 1.27797  
 Low : -17.0759

NOT PROTECTIVELY MARKED

**COPYRIGHT**  
 Reproduced from Ordnance Survey map with the permission of Ordnance Survey on behalf of the controller of Her Majesty's Stationery Office © Crown Copyright (2019). All Rights reserved. NNB GenCo 0100060408. Contains public sector information, licensed under the Open Government Licence v3.0, from UKHO Survey H11495.



**DOCUMENT:**  
 SIZEWELL C PROJECT  
 RESPONSES TO EXAMINING AUTHORITY'S  
 WRITTEN QUESTIONS ISSUED ON 21 APRIL 2021  
 CHAPTER 17: HISTORIC ENVIRONMENT

**DRAWING TITLE:**  
 DISTRIBUTION OF DEPOSITS WITH HIGH  
 PALAEOENVIRONMENTAL POTENTIAL - FIGURE  
 23.1 UPDATE

**DRAWING NO.:**  
 FIGURE 17.5

**DATE:** JUN 2021 **DRAWN:** M.J.G. **SCALE:** 1:22,000 @A4 **REV:** 03

